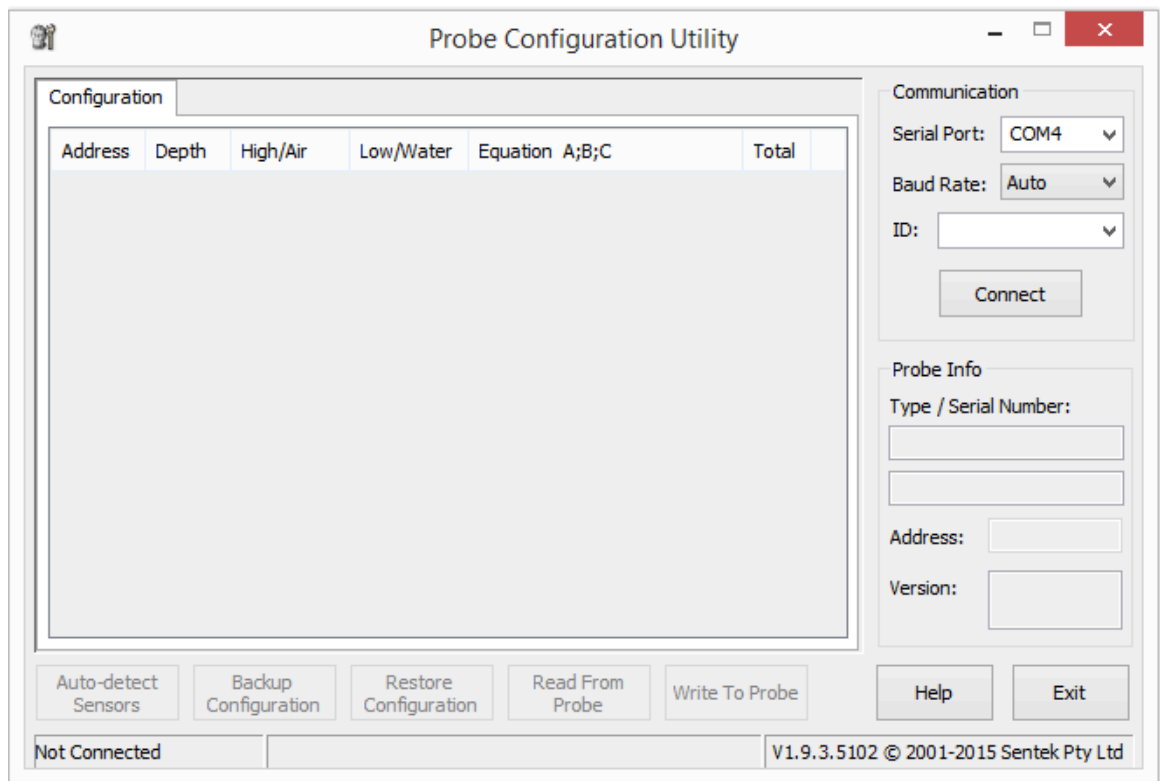


Sentek D&D Firmware Update Guide

V1.0

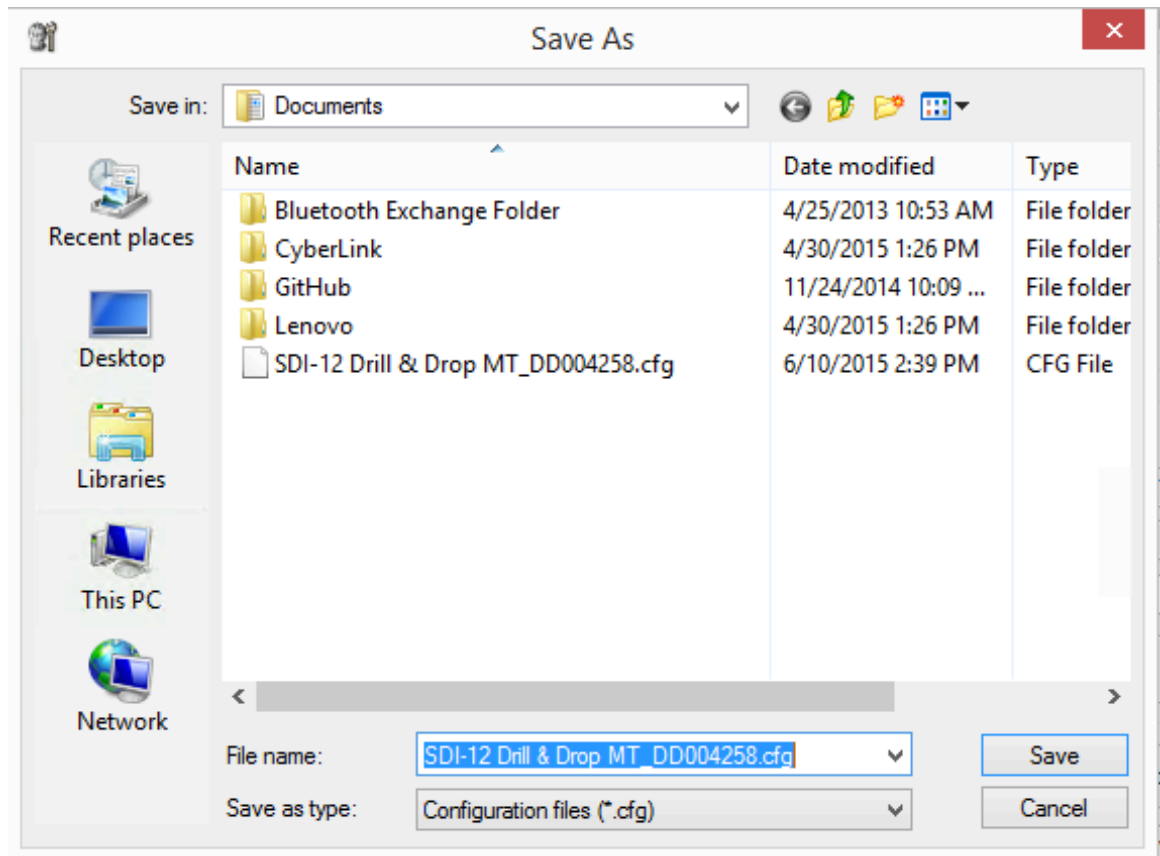
- 1.) Download the “PConfig_Setup.exe” file from http://myfarm.highyieldag.com/docs/PConfig_Setup.exe
- 2.) Open PConfig_Setup.exe to install the Probe Config Utility.
- 3.) Download the “Firmware Sentek Series III SDI-12 Drill & Drop 1.0.2.exe” from <http://myfarm.highyieldag.com/docs/Firmware%20Sentek%20Series%20III%20SDI-12%20Drill%20%26%20Drop%201.0.2.exe>
- 4.) Plug the Sentek USB Programming cable in to your PC. Plug the other end in to the probe. Launch the PConfig program by double clicking on the Probe Configuration.



- 5.) Click on the Connect button. If the connection fails you may need to select another Serial Port from the drop down box. If it connects to the probe you should see the probe data start to appear in the window. It takes a few seconds for it to completely update so wait until you no longer see updates in the window. Note that the current version appears in the Version window. In the screen shot here you can see that this particular probe has version 1.0.2 and doesn't require the update. Normally you would see version 1.0.1.

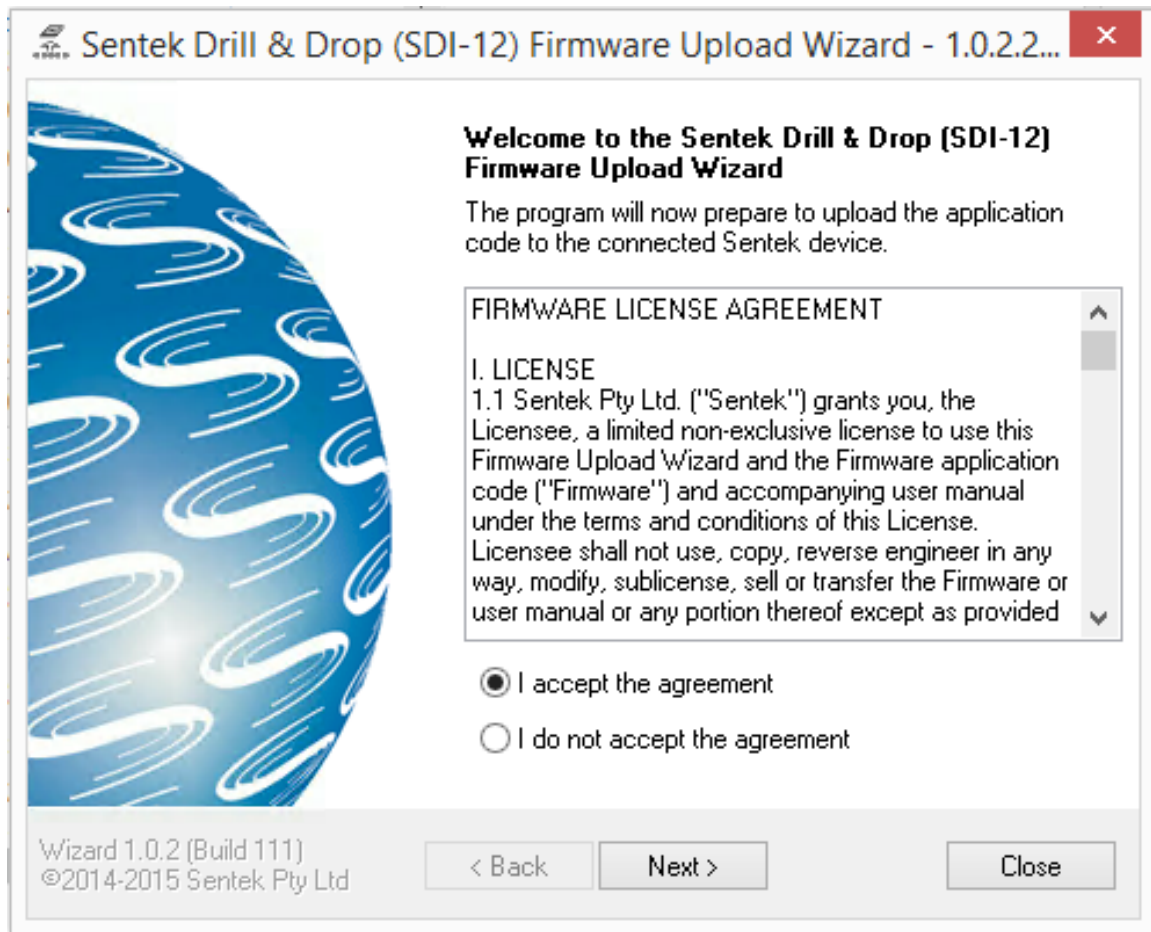
Address	Depth	High/Air	Low/Water	Equation A;B;C	Total
1	5	27121	9376	0.195700; 0.404000; 0.028520	
2	15	27725	10780	0.195700; 0.404000; 0.028520	
3	25	29899	12558	0.195700; 0.404000; 0.028520	
4	35	24942	10522	0.195700; 0.404000; 0.028520	
5	45	24254	10563	0.195700; 0.404000; 0.028520	
6	55	28998	11769	0.195700; 0.404000; 0.028520	
7	65	27366	11971	0.195700; 0.404000; 0.028520	
8	75	25128	10964	0.195700; 0.404000; 0.028520	
9	85	25857	11670	0.195700; 0.404000; 0.028520	
129	5			1.000000; 0.000000	
130	15			1.000000; 0.000000	
131	25			1.000000; 0.000000	
132	35			1.000000; 0.000000	
133	45			1.000000; 0.000000	

- 6.) Click on the Backup Configuration button to back up all the probe configuration data. A dialog box will appear to save the data to a file. Make sure the filename has the serial number of the probe so it can be identified later. Click on the Save button to save it.

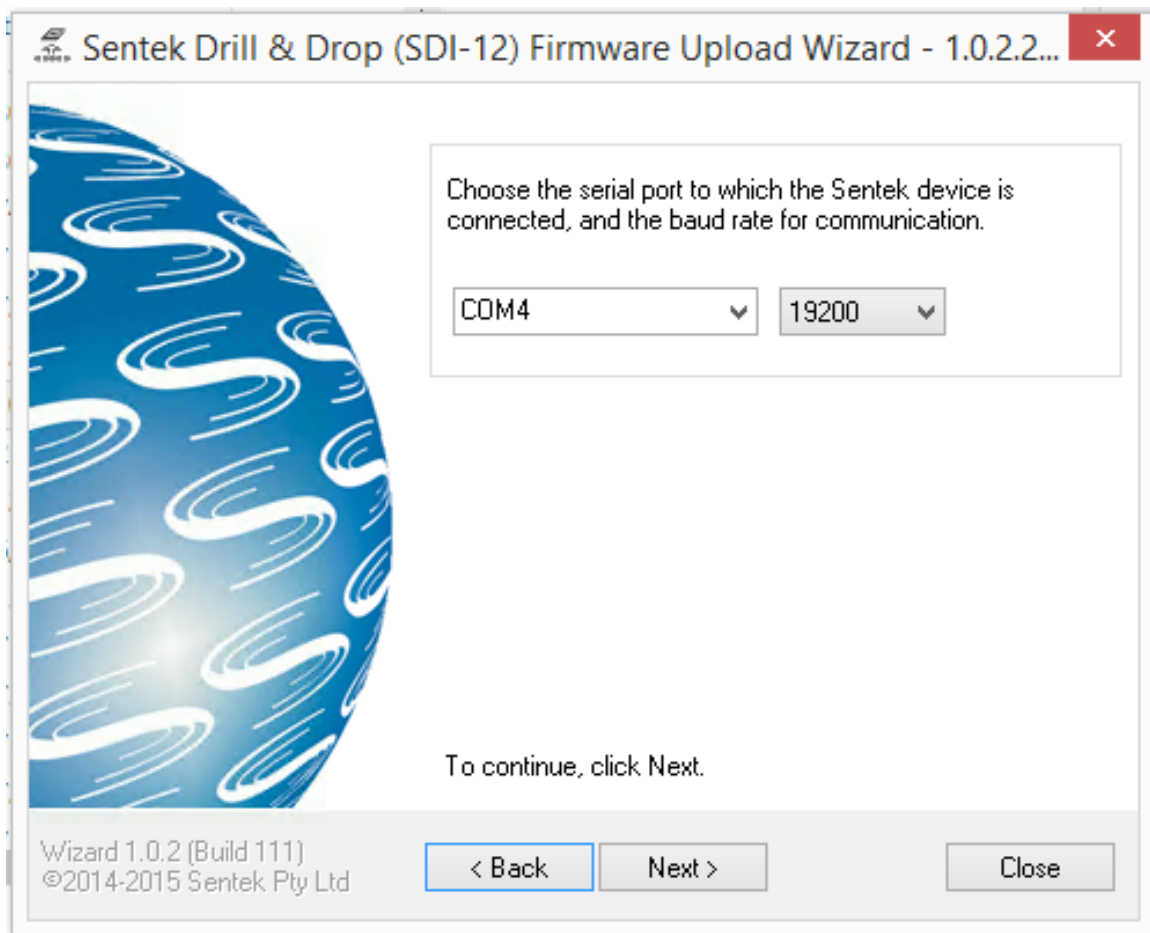


- 7.) Click on the Disconnect button then the Exit button to finish the configuration.

- 8.) Disconnect the probe from the programming cable.
- 9.) Launch the “Firmware Sentek Series III SDI-12 Drill & Drop 1.0.2.exe” program by double clicking on it. Click on the “I accept the agreement” selector and then click the Next button.



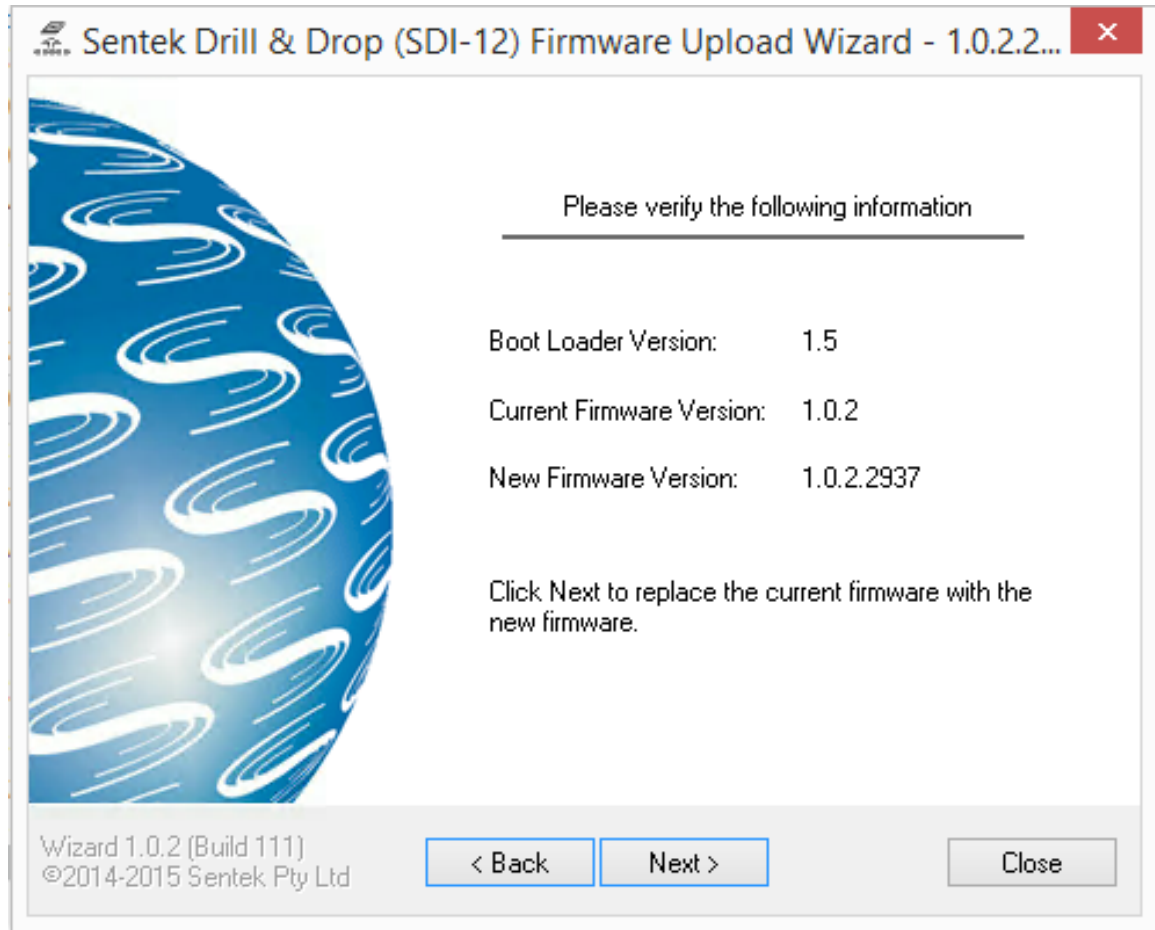
- 10.) Again the correct serial port will likely be selected but use the one that worked for the Probe Config utility, then click on the Next button.



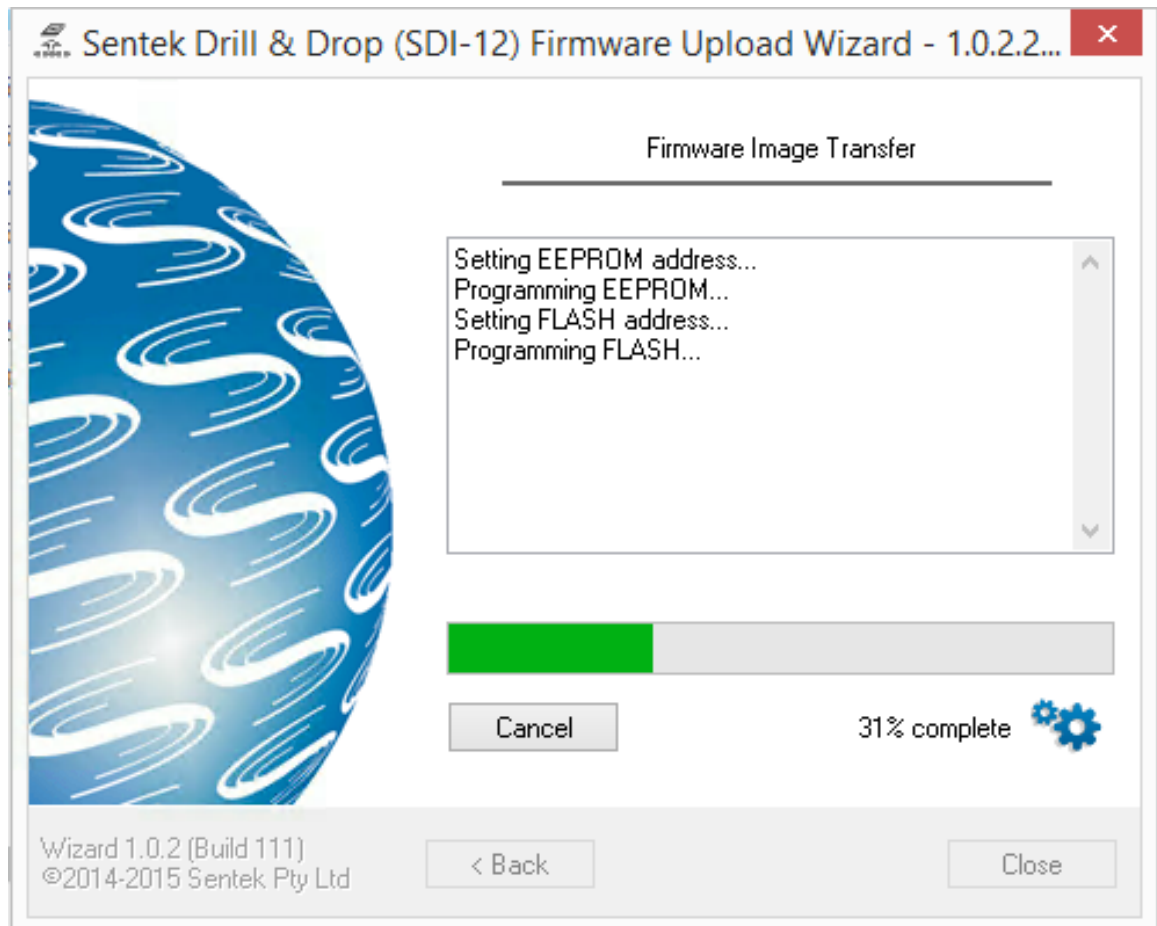
- 11.) The next screen prompts you to power up the device now. Plug the cable back up to the probe when you see the screen.



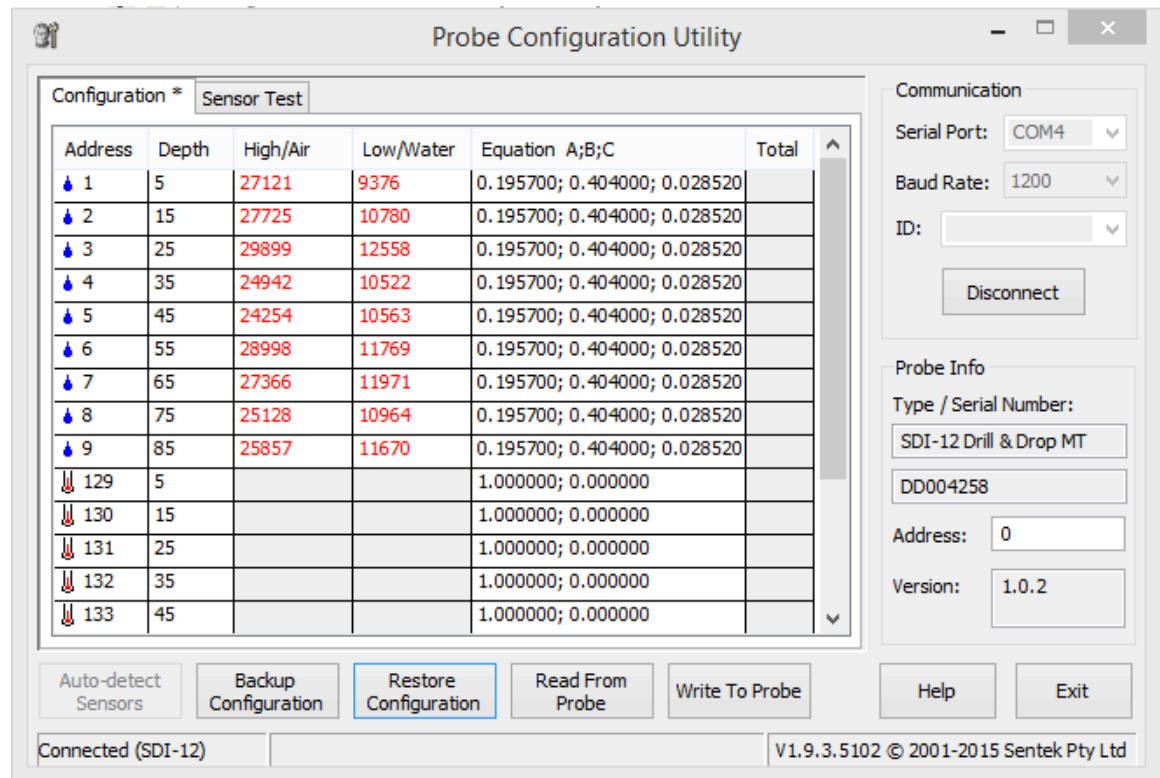
- 12.) The screen will switch to “Please verify the following information. In this case the probe has already been updated to 1.0.2 and doesn’t really require the update. You would normally see that the probe has version 1.0.1. For purposes of this guide we will re-apply the update.



- 13.) You will now see a progress screen showing the progress of the update. When it is complete you will see a green check mark at which time you can click on the Close button.



- 14.) Relaunch the Probe Configuration Utility and Connect to the probe as before. This time you will notice that the configuration data has been largely erased. Click on the “Restore Configuration” button and select the configuration backup file that was saved earlier. Be sure to select the one that matches the serial number of the probe. The restored values will appear in red on the screen.



- 15.) Click on the “Write To Probe” button to update the configuration. A confirmation dialog box will appear. Click OK. It will take several seconds for the probe to be updated, wait until the Configuration window finishes updating and the updated values will all be shown in black, as they were when we started this process. Click on the Disconnect button, then the Exit button to finish.